



bluglass Tower

stainless
STEEL

I.T.

portion
control

BLUGLASS TOWER

Supply	230 V - 50 Hz
Absorbed power	30 W - 0,19 A
Inlet water pipe	Ø5/16" (8 mm)
Dispensing area height (mm)	319
Typology	Electronic tap
Net weight (kg)	8
Gross weight (kg)	10
Dimensions W x D x H (mm)	227 x 209 x 514
Packaging dimensions (mm)	800 x 260 x 255
Dispensing options	Cold still water, cold sparkling water (mod. 2W) or cold still water, sparkling cold water and room temperature water (mod. 3W)
Materials	Robust stainless steel and tempered glass
Push buttons	Stainless steel push buttons

OTHER CHARACTERISTICS

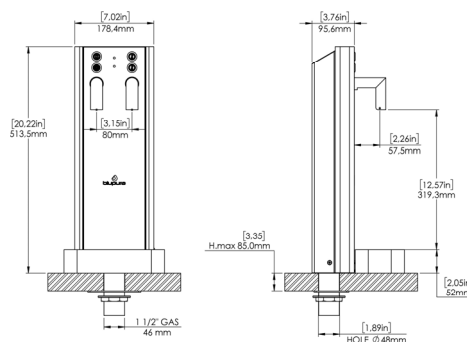
It can be connected to any type of under counter cooler.
Stainless steel drip tray

OPTIONAL

Portioning system

Filters UV LED OUT (4 W)

For a proper installation of the system, the use of the WATER BLOCK is compulsory.



CERTIFICATIONS

