



bluglass Tower **hot**

stainless
STEEL

I.T.

hot

BLUGLASS TOWER HOT

Supply	230 V - 50 Hz
Absorbed power	30 W - 0,19 A
Inlet water pipe	Ø5/16" (8 mm)
Dispensing area height (mm)	319
Typology	Electronic tap
Net weight (kg)	8
Gross weight (kg)	10
Dimensions W x D x H (mm)	513 x 96 x 209
Packaging dimensions (mm)	800 x 260 x 255

Dispensing options	Cold still water, cold sparkling water and hot water
Materials	Robust stainless steel and tempered glass
Push buttons	Stainless steel push buttons

OTHER CHARACTERISTICS

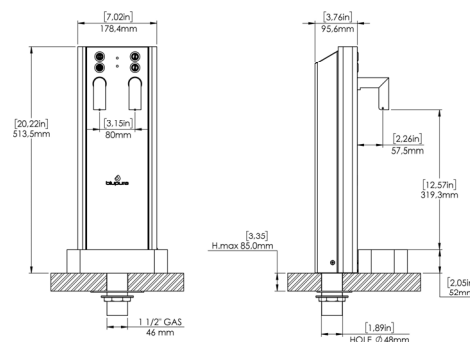
It can be connected to any type of under counter cooler.

OPTIONAL

Stainless steel drip tray

Filters UV OUT (4 W)

For a proper installation of the system, the use of the WATER BLOCK is compulsory.



CERTIFICATIONS

